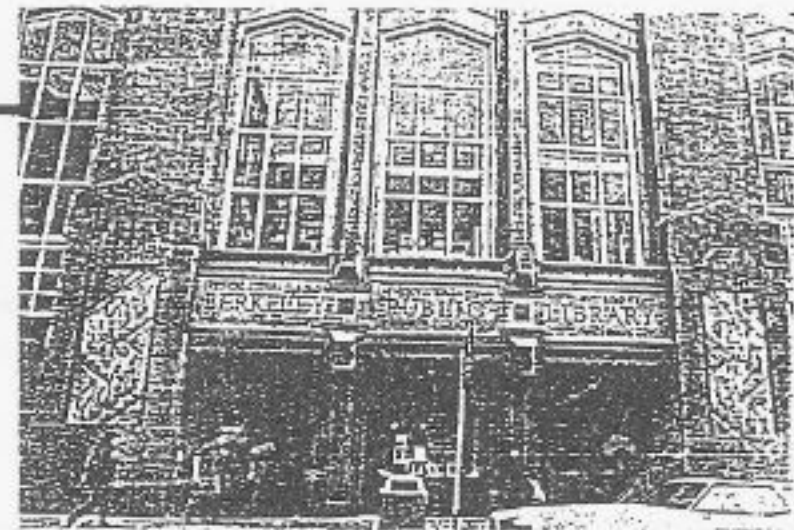


GENERAL OBJECTIVES

The city of Berkeley is rich in resources, including programs of educational and recreational value provided by both public agencies and small neighborhood-based organizations.



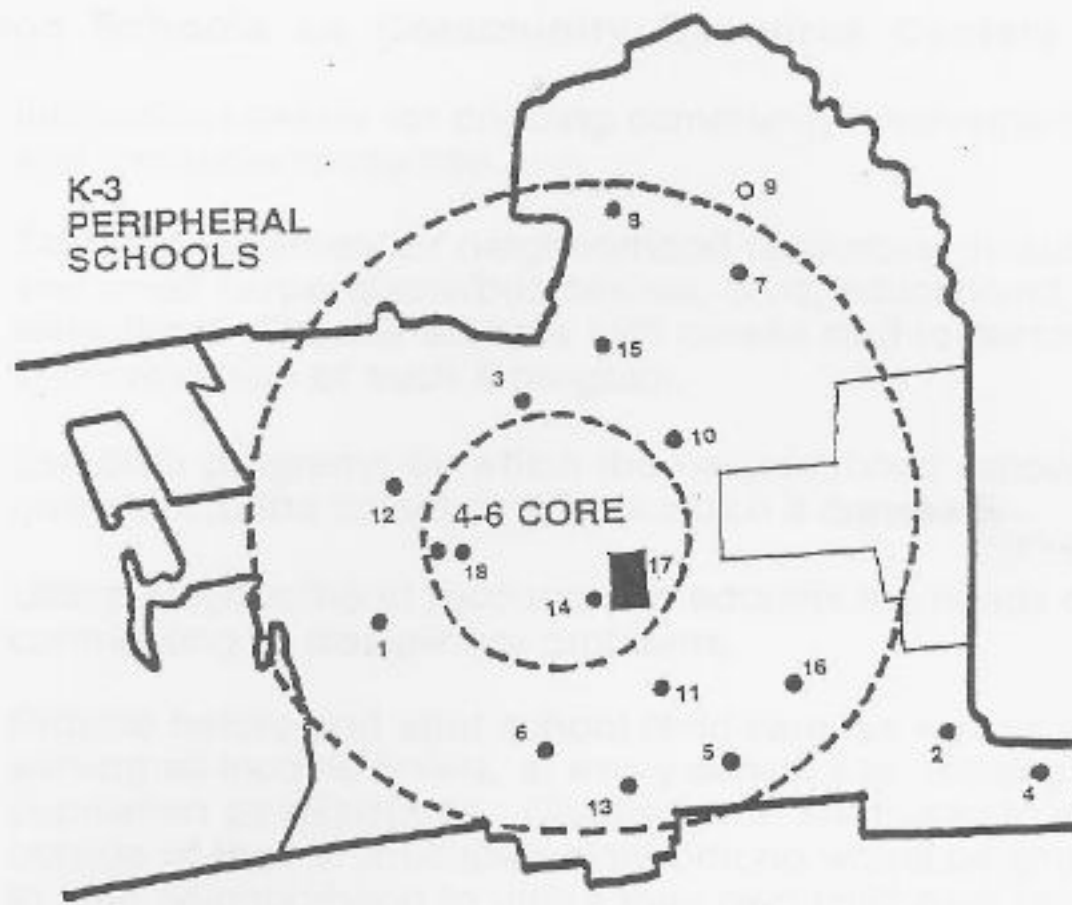
The City As School plan recognizes the range of these efforts and recommends that these resources be better integrated into the educational system. The following priorities characterize the City As School plan:

- Concentrate 4-6 schools in a central zone to share city resources
- Institute K-3 neighborhood schools while ensuring racial balance
- Retain and strengthen the current K-3/ 4-6/ 7-8 configuration
- Alter current zoning plan to reduce busing times
- Expand use of K-3 facilities to include community services

The institution of K-3 neighborhood schools in this plan is a response to the stated needs of parents to have a local facility in which they could more easily become involved. Given the need to integrate schools, this plan still requires limited busing among K-3 schools but attempts to reduce the degree to which younger students are bused.



Additionally, the plan proposes that the decentralized k-3 facilities also become neighborhood centers housing community activities. These school facilities could support after-school activities for neighborhood students, thereby reinforcing the link between students and their communities while also providing a source of continuity for students graduating to different schools every few years. The introduction of shared community and school facilities might also provide a more cost efficient use of buildings which are typically under utilized. The plan retains the current grade configuration based on students expressed satisfaction with the current configuration and with the intent of exposing students to as many school resources as is feasible in the course of their education.



- 1 Columbus
- 2 Emerson
- 3 Jefferson
- 4 John Muir
- 5 Le Conte
- 6 Longfellow
- 7 Oxford
- 8 Thousand Oaks
- 9 Cragmont
- 10 Whittier Arts Magnet
- 11 East Campus
- 12 Franklin
- 13 Malcolm X
- 14 Washington
- 15 Martin Luther King
- 16 Willard
- 17 Berkeley High

LOCATION CONCEPT

Neighborhood Schools as Community Resource Centers

Information center for ongoing community involvement programs and available resources.

Foster involvement of neighborhood resources, including large and small corporations/businesses, civic, educational, and cultural institutions. Provide schools with on-site staff to personally assist in coordination of such a program.

Establish programs by which the neighborhood schools/students give back to the community from which it draws.

Utilize neighborhood resources to address the needs of students contributing to disciplinary problems.

Provide before and after school child care, as well as daycare, serving all income levels, at every school site, utilizing student population as assistants. Children who are bused to schools outside of their immediate neighborhood would be shuttled back to their neighborhood to utilize their own child care facility, allowing socialization with friends and relatives.

Provide after school tutoring for students who live in the neighborhood, regardless of whether they attend that particular school or not.

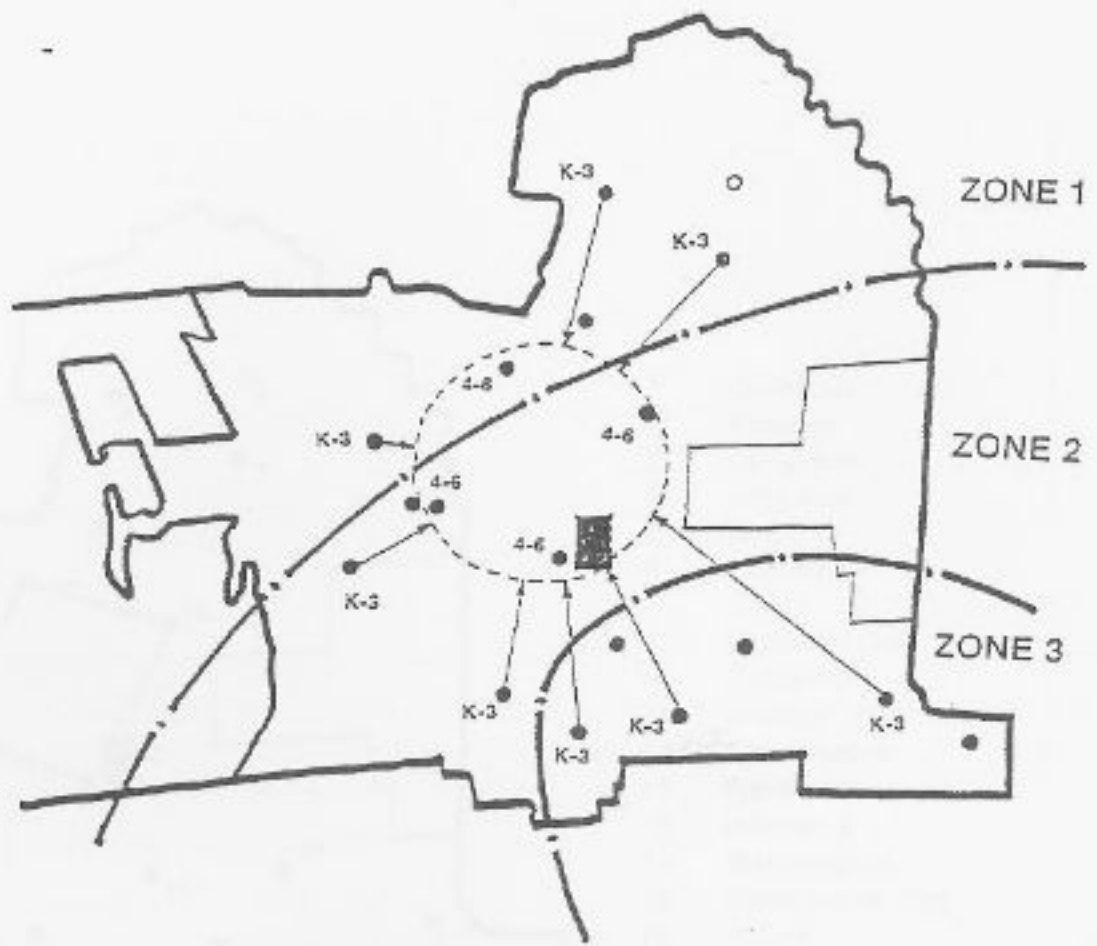
Each neighborhood school provides health and human services. By decentralizing and utilizing neighborhood school facilities, agencies are smaller, more intimate, and more approachable.

Each neighborhood school houses a community services office that concentrates only within that neighborhood.

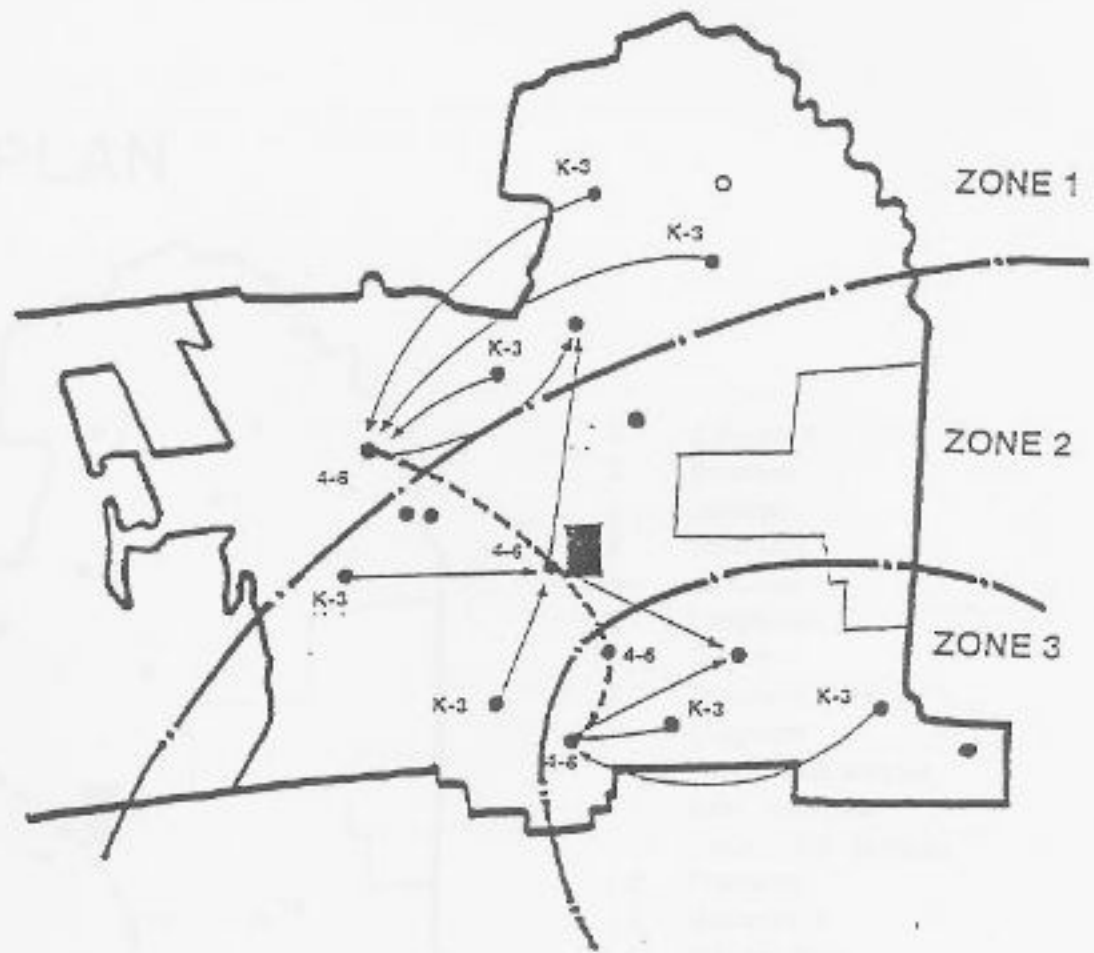
Provide opportunities for student/parent(s) workshops, strengthening connections within the family, within the neighborhood, and with the school.

Establish multi-cultural emphasis within a neighborhood school, depending on the ethnicity of the neighborhood.

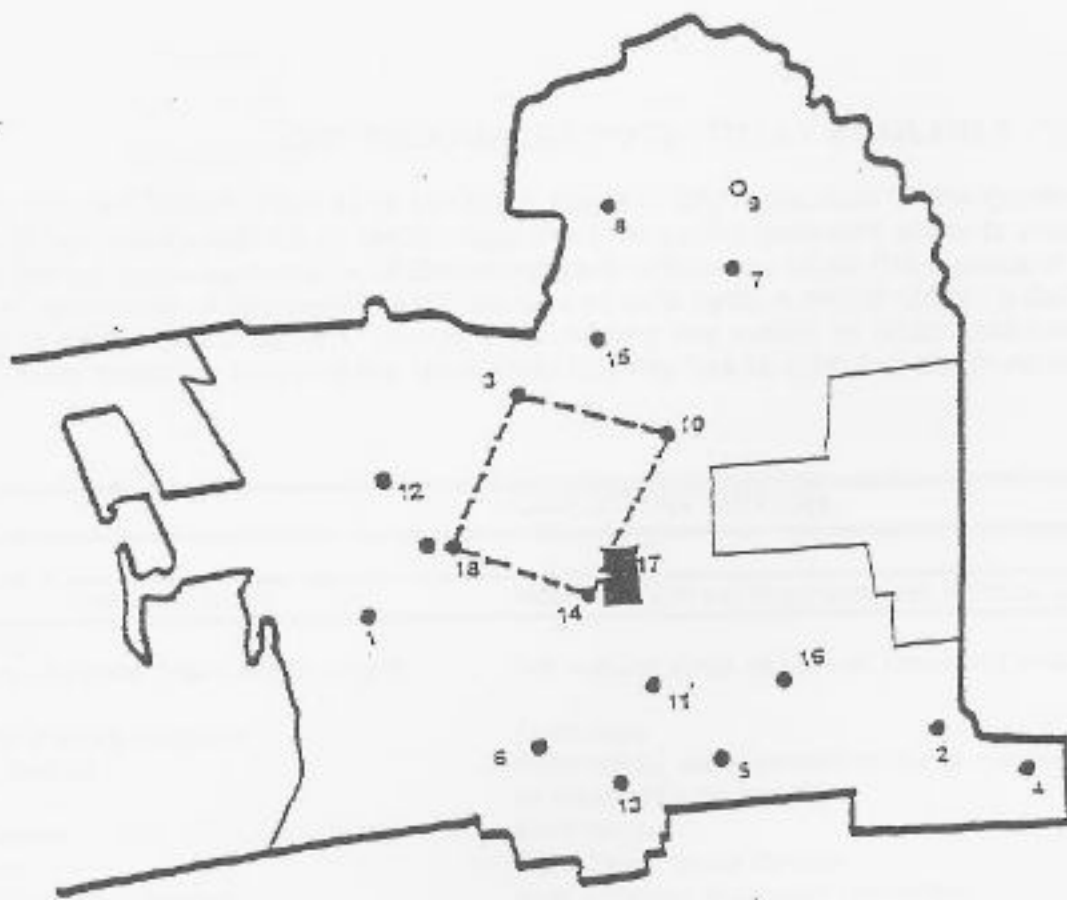
Note: Some of these proposals have been extracted from furnished support material given to MIT from BUSD.



ZONING PLAN
Diamond

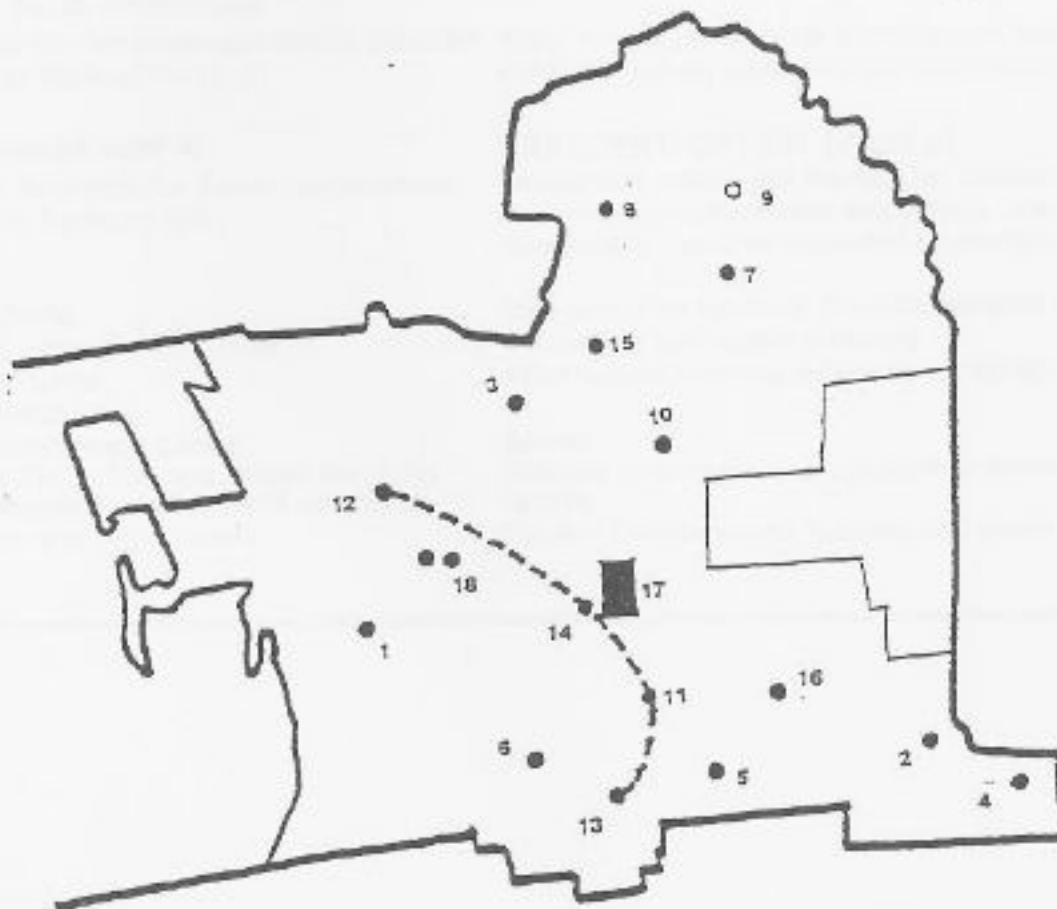


ZONING PLAN
Crescent



- 1 Columbus
- 2 Emerson
- 3 Jefferson
- 4 John Muir
- 5 Le Conte
- 6 Longfellow
- 7 Oxford
- 8 Thousand Oaks
- 9 Cragmont
- 10 Whittier Arts Magnet
- 11 East Campus
- 12 Franklin
- 13 Malcolm X
- 14 Washington
- 15 Martin Luther King
- 16 Willard
- 17 Berkeley High
- 18 Strawberry Creek Park (future 4-6 school)

4-6 DIAMOND PLAN



- 1 Columbus
- 2 Emerson
- 3 Jefferson
- 4 John Muir
- 5 Le Conte
- 6 Longfellow
- 7 Oxford
- 8 Thousand Oaks
- 9 Cragmont
- 10 Whittier Arts Magnet
- 11 East Campus (future 4-6 school)
- 12 Franklin
- 13 Malcolm X
- 14 Washington
- 15 Martin Luther King
- 16 Willard
- 17 Berkeley High

CITY RESOURCES POTENTIALLY AVAILABLE FOR SCHOOL USE

The City as School Plan aims to utilize existing city resources to the greatest extent possible. The plan proposes new 4-6 school configurations to encourage the interaction between schools and their surrounding city resources. The Diamond Option takes advantage of Berkeley park resources while the Crescent option takes advantage of the spine of institutional resources. Additionally, a concurrent shuttle system might run on a daily or weekly basis between schools and resources at peripheral locations, thereby increasing the extent to which schools could exploit all city resources. The following tables describe many of the resources the city has to offer but are in no way exhaustive of the possibilities.

CRESCENT OPTION	
Existing Facility	Notes on Current Programs and Possible Uses
Institutional:	
Berkeley Libraries: Main, West, South	For regular visits as part of proposed shuttle service. Class projects; video resources
Berkeley History Museum Hall of Justice	Field trips Field trips,(development of civics curriculum or internship program?)
Civic Center City Hall	Field trips Field Trips, civics classes
Black Repertory Theater	Arts program extension potential?
Common Arts	Arts program extension potential?
Pacific Fine Arts Theater	Arts program extension potential?
California Theater	Potential use of stage facilities?
Pacific Shattuck Theater	Potential use of stage
Berkeley Support Services Health Center New Perspectives	Physical Ed curriculum Drug and alcohol counseling for ages 9-18 and teachers. Possible drug prevention program?
Young Adult Project Berkeley Youth Alternatives	
Ala Costa Ctr. for Developmentally Disabled Alta Bates Medical Ctr (U.C)	After school program for handicapped students. Exhibits, games, classes which teach preventative health care.
Support Services(cont'd):	
Berkeley Academy for Youth Development Eureka (at Berkeley H.S.)	CRESCENT OPTION (cont'd) Residential school and therapy for adolescent girls. Currently provides career and college counseling to older students; access to computers. Could be extended to younger students?
In Dulci Jubilo East Bay Asian Youth Center Break the Cycle Shield Health Care	Mini-grants to teachers. Possible increase in teacher participation? Counseling and career guidance After school tutoring service for BUSD students.
Grove Recreational Center Berkeley Senior Centers: West, No. & So. West Campus Swim Center(if rehabbed) YMCA(So. and down town)	Sports Possible tutor/mentor program with seniors; student volunteerism Sports Current fitness,sports, tutorial, and youth leadership training. Expansion Potential?

PERIPHERAL SHUTTLE RING

Existing facility	Possible Use/Program
Institutional:	
Claremont Library	Possible tutor programs; class projects; video viewing
Shawl Anderson Dance Center	Young Adult performing company. Physical Ed extension?
Roberts and Blank Dance Theater	Multicultural theatrical works; performing arts and exercise programs?
Pacific Film Archives	Film and history extension program?
<hr/>	
Julia Morgan Theater	Arts extension programs
Kids Jazz Bands	Currently offers music, composition and improv classes. Also performances.
North Berkeley Library	Tutoring; class projects
Young Actors Workshop	Performance with emphasis on film. Performance Arts extension
Young Musicians Program (UCB)	Arts extension program
Support Services:	
Disabled Children's Computer Group	Technologies for disabilities. Possible volunteer or internship program
Project Seed	Current unique math program providing classes, workshops and teacher training.
Gilman Street Club	Self Regulated Youth Center. Needs Volunteers.
Stiles Hall	Educational Guidance Ctr. Staffed by volunteer U.C. Students. Potential for internships and mentor program; foster relationships between young students and U.C. students.
Recreational:	
Albrier Recreational Center	Physical Ed./sports extension potential?
Aquatic Park	Biology/ecology program extension?
King Swim Center	Physical Ed./sports extension potential?
James Kinney Recreation Center	Physical Ed./sports extension potential?
Marina(Adventure Playground)	Physical Ed./sports extension potential?
Willard Park Swim Center	Physical Ed./sports extension potential?
Cal Sailing Club	Open to all; open houses held.
Environments for Learning	
Albany Berkeley Soccer Club	Non profit club for boys and girls.

The City As School

Group Members:

Darrell Aldrich

Lyne Bernard

Heather Hootman

Somya Parthasarathy

REFERENCES

- Berkeley, City of (1993a).** Youth Services Directory. Health and Human Services Department. April.
- Berkeley, City of (1993b).** Conditions Trends & Issues: A Background Report for updating the City's general Plan. Ed. John Ledbetter and Libby Tyler. September.
- Berkeley, City of (1993c).** Youth Strategy Workshop #3. Thursday October 7, North Berkeley Senior Center. Facilitated by the City Manager's Office.
- Berkeley Unified School District (1993a).** Strategic Plan 1992-1996. Adopted by the Board of Education, Berkeley, CA December 18, 1991.
- Berkeley Unified School District (1993b).** School Organization Task Force Report. Ad Hoc Task Force on School Organization, Berkeley, CA February 17..
- Berkeley Unified School District (1993c).** Measure A and School Organization: Update. A report from the superintendent. June 1.
- Hardison, Komatsu, Ivelich and Tucker (1993).** Interim Report to the Berkeley Unified School District Board of Education. San Francisco, March 5.
- Fern Tiger Associates (1993).** House Meeting Report.
- Toward a New Model for K-12 Education,** MIT Spectrum, MIT and Society, Fall 1993, pp.8-14.